

Emergency gate, 3.05 x 6.59 m, for the turbine and irrigation tunnels of Dokan Dam, Iraq. Gate suspended from 160-ton crest crane. Max. water head 95 metres.

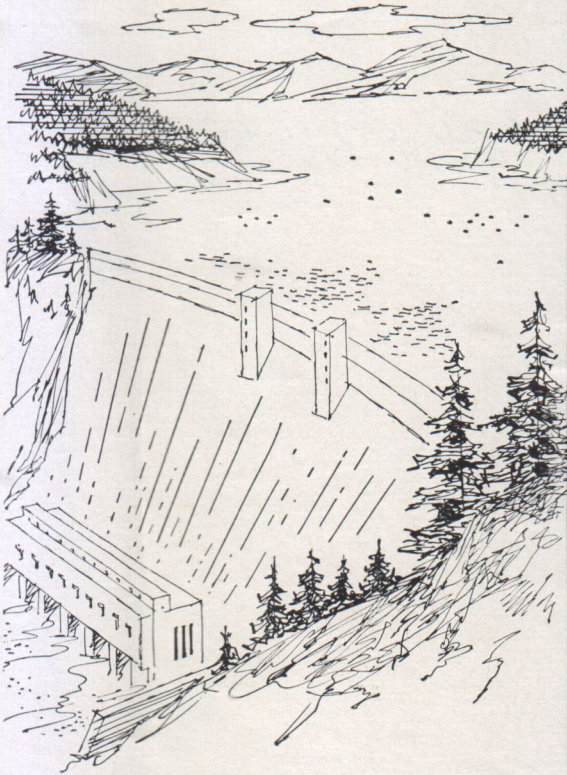
M·A·N

HYDRAULIC STRUCTURES

MASCHINENFABRIK AUGSBURG-NÜRNBERG AG GUSTAVSBURG WORKS
GUSTAVSBURG/HESSEN (GERMANY) REPRESENTATIVES IN ALL COUNTRIES

WATER POWER August 1962

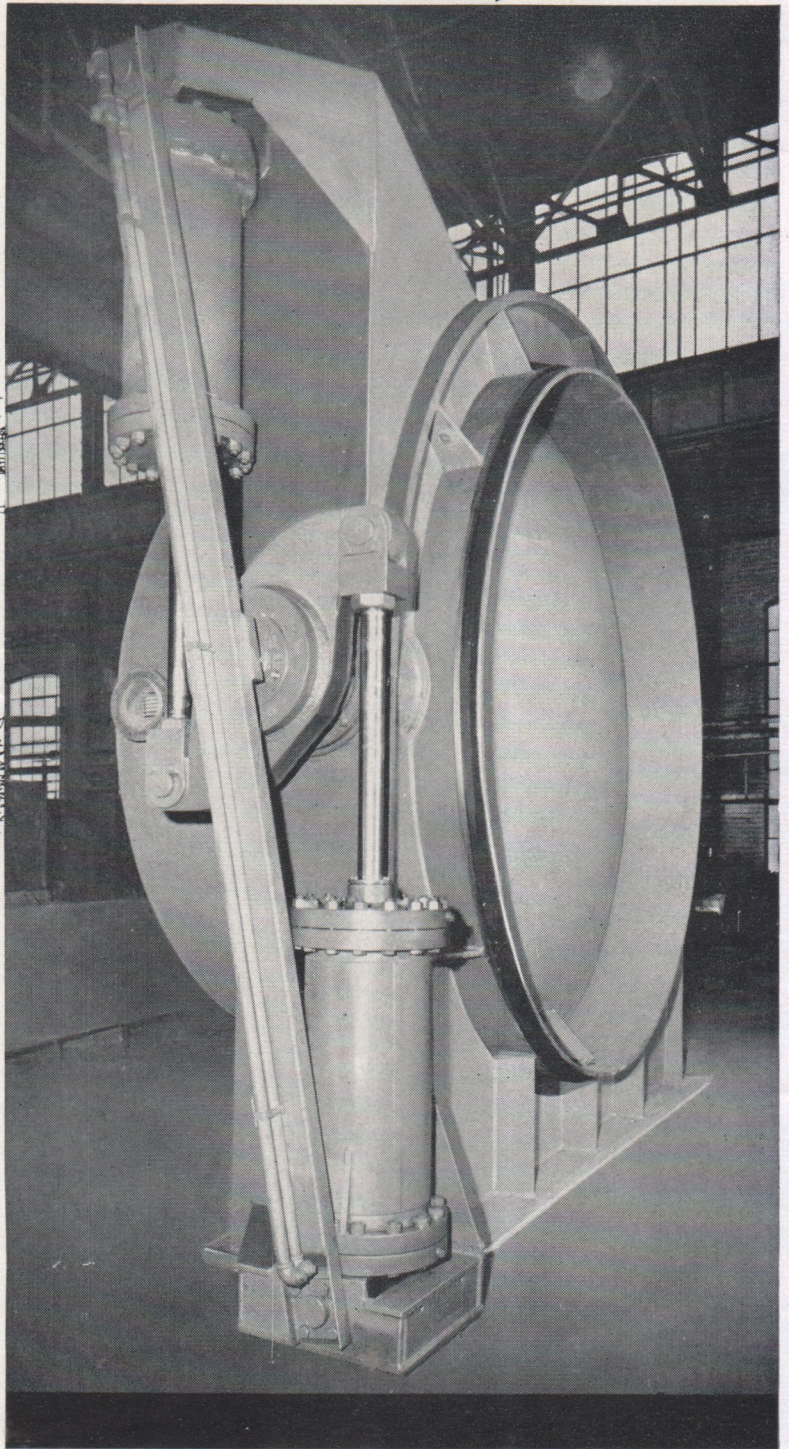
Butterfly Valves



Designed for 80 p.s.i. water pressure and emergency closing against flow of 1,680 C.F.S. under 123 ft. head, the illustration shows a shop photo of one of three 12'-0" Turbine Shut-off Butterfly Valves built for a progressive mining Company in Quebec.

The valve body and disc are entirely fabricated from Steel Plate with the seal seat and disc seal of Stainless Steel. The seal of the disc is adjustable.

Another example of the fine engineering Industry expects from the shops of Canadian Vickers.

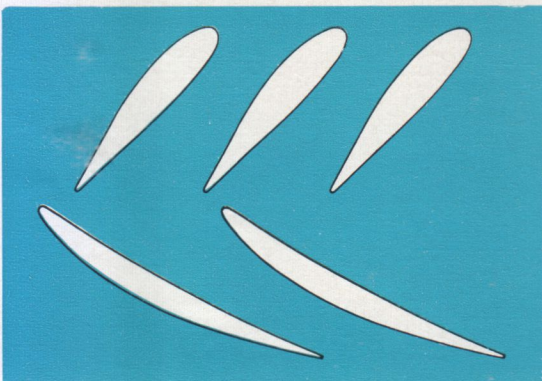
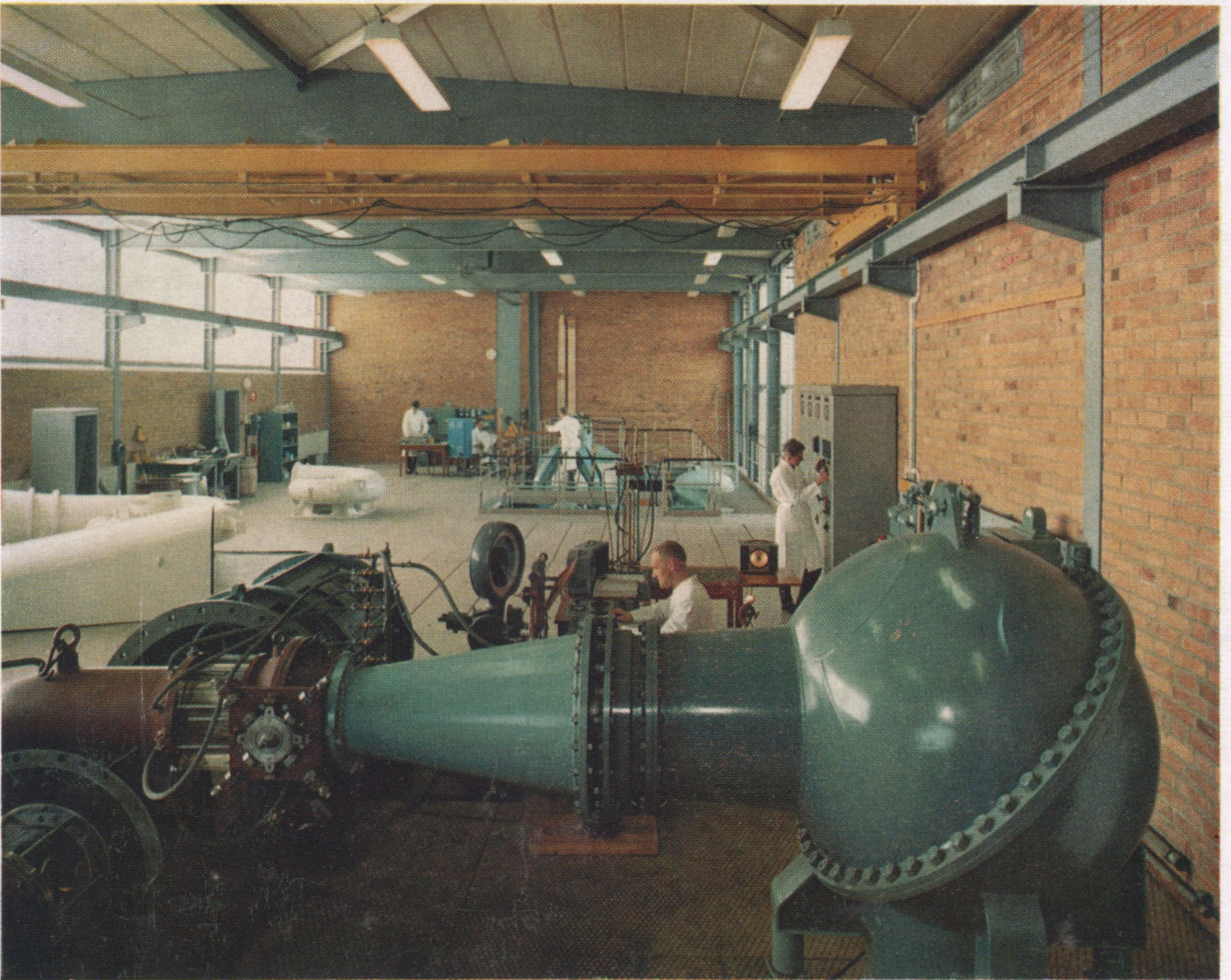


CANADIAN
VICKERS

LIMITED

MONTREAL • TORONTO
MEMBER OF THE VICKERS GROUP

MODERN TURBINE LABORATORY AT YOUR SERVICE



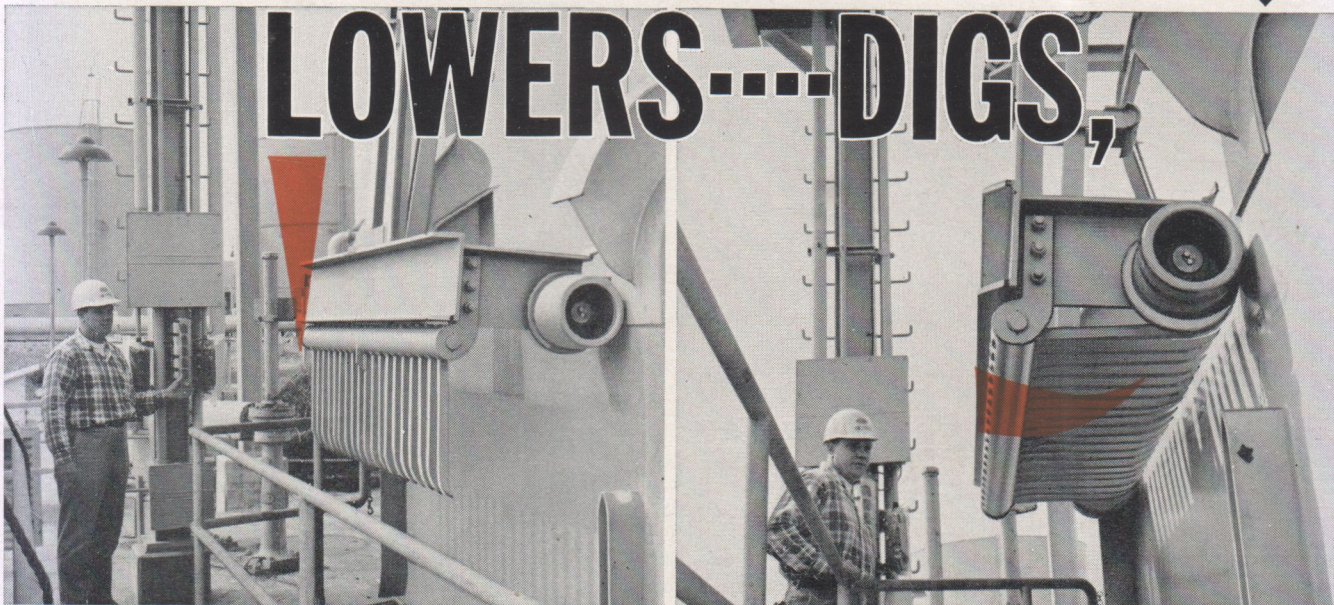
The efficient performance of hydraulic machinery depends mainly on the *profiles* of the runner and water passages — in the KMW laboratory we develop and select the most suitable *profiles* for any type of hydraulic turbine, pump turbine or valve. A staff of skilled engineers with modern equipment provide project and design offices with all the basic data necessary for the most advantageous solution of your hydraulic problems.

WATER TURBINES BY **KMW**

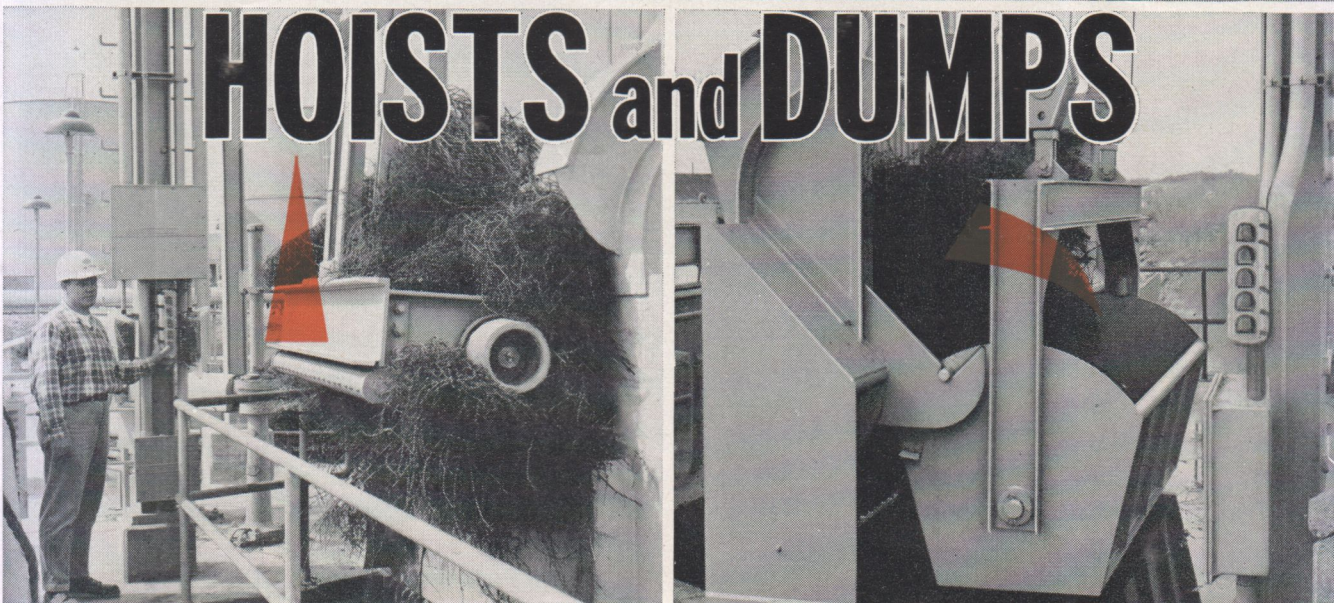
AB KARLSTADS MEKANISKA WERKSTAD, KARLSTAD, SWEDEN
Representatives in Canada:

A. Johnson & Co. (Canada) Ltd., 1255 Laird Boulevard, Montreal 16, Que.

LOWERS... DIGS,



HOISTS and DUMPS



new DIGGING trash rake cleans right from the bottom up

Non-guided, self-digging and self-dumping, the new Type B Trash Rake is pushbutton-controlled by just one man. He precisely directs chisel-point teeth — digs bottom silt, clears intake racks of all debris — to reduce head and power losses. Then he hoists and dumps the load into trash car, hopper or over traveling apron.

New Type B Rake is economical

— because of inherent low cost of non-guided rake installation. Efficient — because of rake positioning flexibility that ends jamming problems.

With its dual-drum hoist, new Type B Rake utilizes a main hoist for lifting the rake. An auxiliary hoist controls rake-tooth position and action through a variety of tooth angles.

Choose traveling hoist car or monorail models in 6- 8- and 10-foot rakes; 3- to 7½-hp motors; 3000- to 6000-lb capacities. Larger units special. Completely automatic raking cycle at added cost.

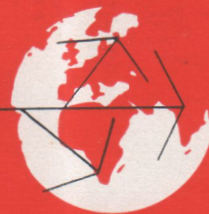
• • •

Your nearby Allis-Chalmers representative has full details. Or write **Allis-Chalmers**, Hydraulic Division, York, Pa.

A-1574

Outside United States contact Allis-Chalmers International, or in Canada, contact Canadian Allis-Chalmers

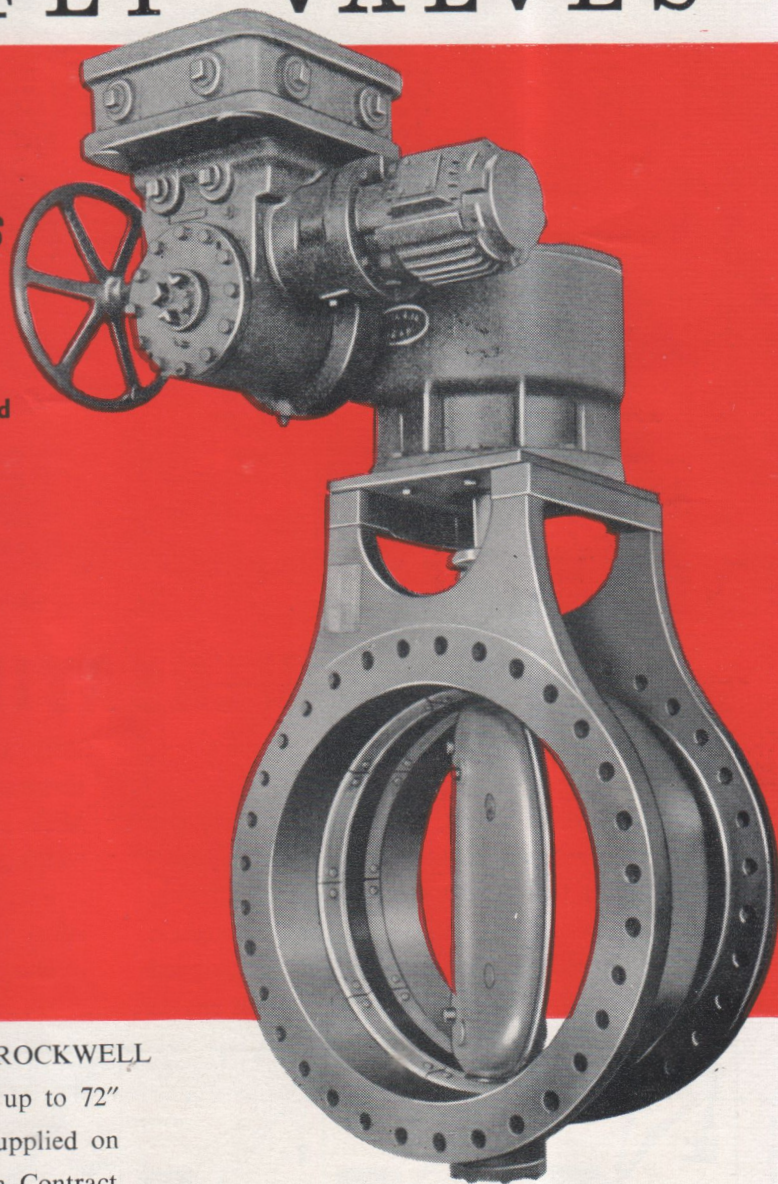
*From Pakistan, to Greece
or anywhere in the world*



COCKBURN-ROCKWELL BUTTERFLY VALVES

*offer a BIG
list of advantages*

- ★ Leak-tight shut off.
- ★ Great economy in space, compared with gate or globe valves. 2/3 of weight approximately.
- ★ No fouling, low pressure drop.
- ★ Easy operation.
- ★ Simple, solid design of body, disc and shaft. Great strength, minimum maintenance.
- ★ International servicing available.



Thirty-six COCKBURN-ROCKWELL Butterfly Valves in sizes up to 72" diameter were recently supplied on a Pakistan Power Station Contract. A further thirty valves, 48" to 72" diameter, are now being installed in the Athens Water System extension.



COCKBURNS LTD Cardonald Glasgow SW1