

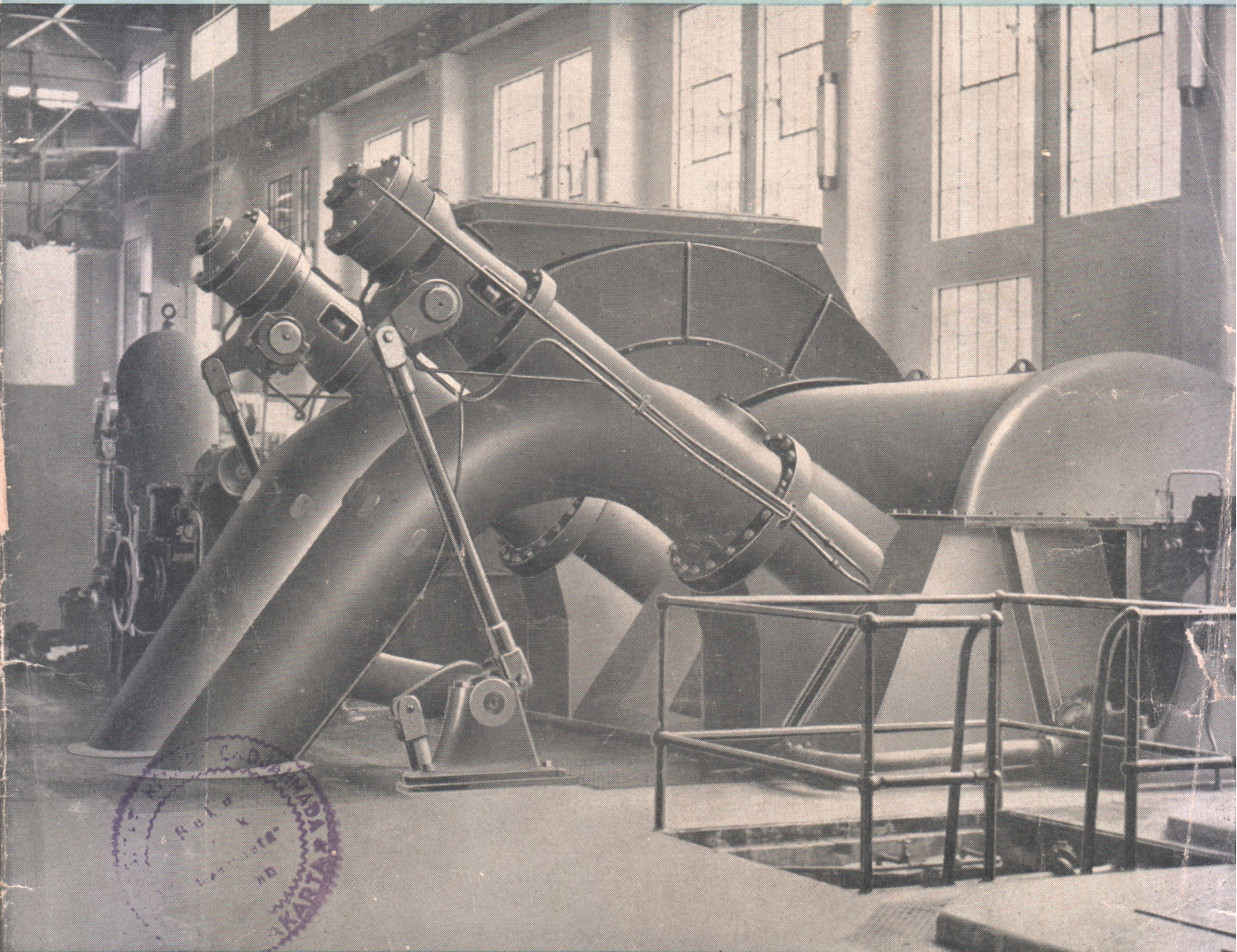
P/1229/52 1/16

Water Power

INTERNATIONAL DEVELOPMENT OF HYDRO-ELECTRIC POWER

PRICE 2/6

JUNE 1952



A 21,000 h.p. double runner twin jet impulse water turbine driving a 16,750 kVA 11,000 volts alternator in Tasmania.

'ENGLISH ELECTRIC'

hydro-electric power

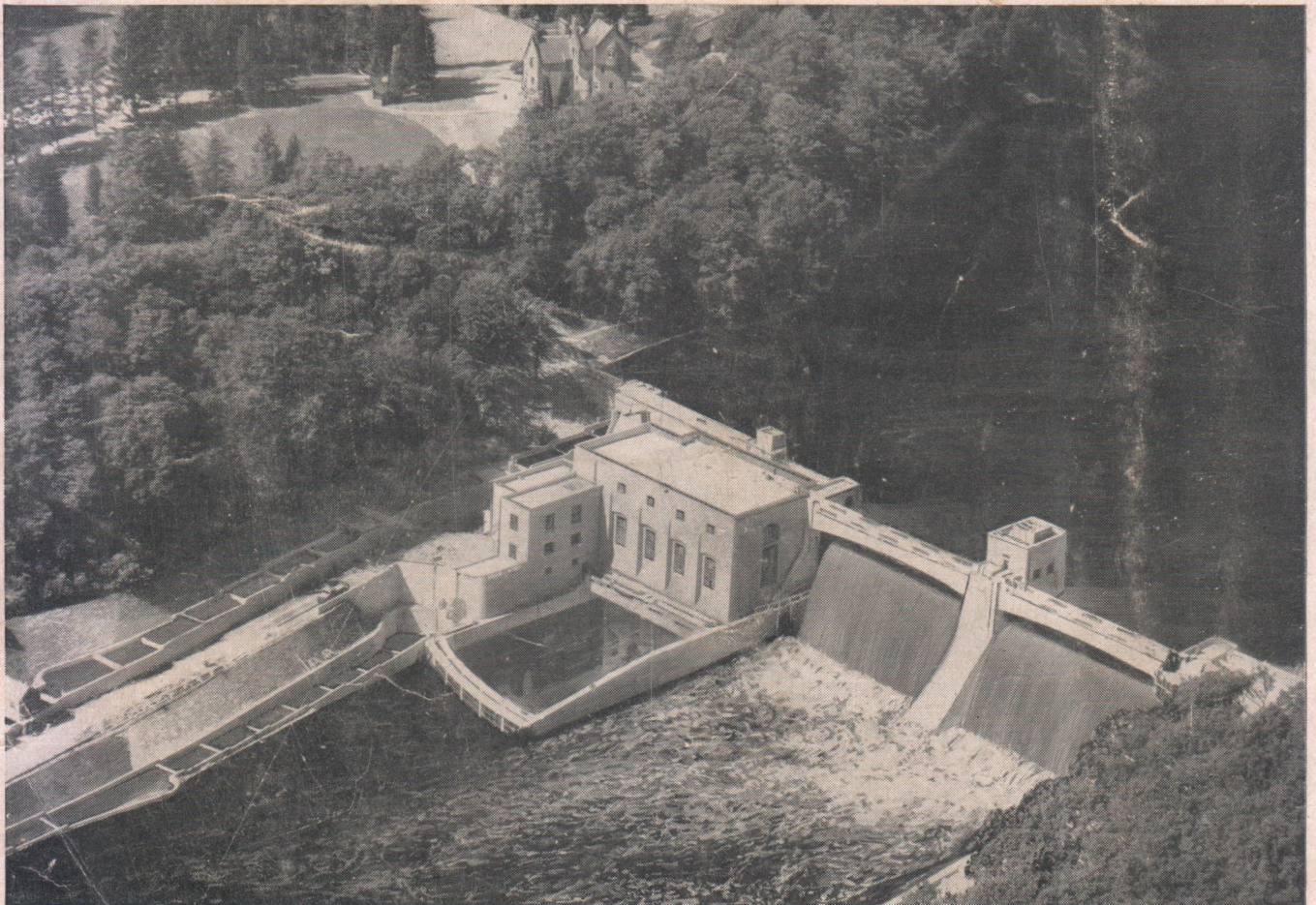
The ENGLISH ELECTRIC Company manufactures complete hydro-electric generating plant ranging from main turbines and alternators to the smallest auxiliaries, including the transformers and switchgear. 'ENGLISH ELECTRIC' plant has been installed in all parts of the world under widely diverse conditions, meeting perfectly an extensive range of requirements.

The ENGLISH ELECTRIC Company Limited, Queens House, Kingsway, London, W.C.2

Hydro-Electric Department, Stafford

Works: STAFFORD · PRESTON · RUGBY · BRADFORD · LIVERPOOL · ACCRINGTON

HYDRO-ELECTRIC PLANT in the Scottish Highlands



The Pitlochry station of the North of Scotland Hydro-Electric Board, shown in the illustration, contains two 8,333 kVA Metrovick vertical Generators driven by Kaplan turbines of Boving manufacture, operating at a normal speed of 167 r.p.m. and designed for an overspeed of 480 r.p.m. Other Metrovick gear in this station is the generator control equipment including the voltage regulators.

The M.V.E. Co. Ltd. also manufacture Synchronous Condensers, Transformers, Switchgear and automatic control equipment for the largest hydro-electric power schemes all over the world.

Branches at: **BUENOS AIRES,
JO'BURG, RIO DE JANEIRO,
SHANGHAI, WELLINGTON,
Etc.**

Agents in: **AUSTRALIA,
CANADA, FINLAND, INDIA,
PAKISTAN, MEXICO, NOR-
WAY, N. & S. RHODESIA,
PORTUGAL, SPAIN, Etc.**



METROPOLITAN-VICKERS ELECTRICAL CO. LTD., MANCHESTER 17, ENGLAND

Member of the A.E.I. group of companies

METROVICK

hydro-electric plant for maximum power production